



BUREAU
VERITAS

BUREAU VERITAS

IN-SERVICE VERIFICATION SERVICES



SUMMARY

01

Lifting Inspection & Operations

02

Elevator Inspection

03

Electrical Inspection

04

Fire Safety Inspection

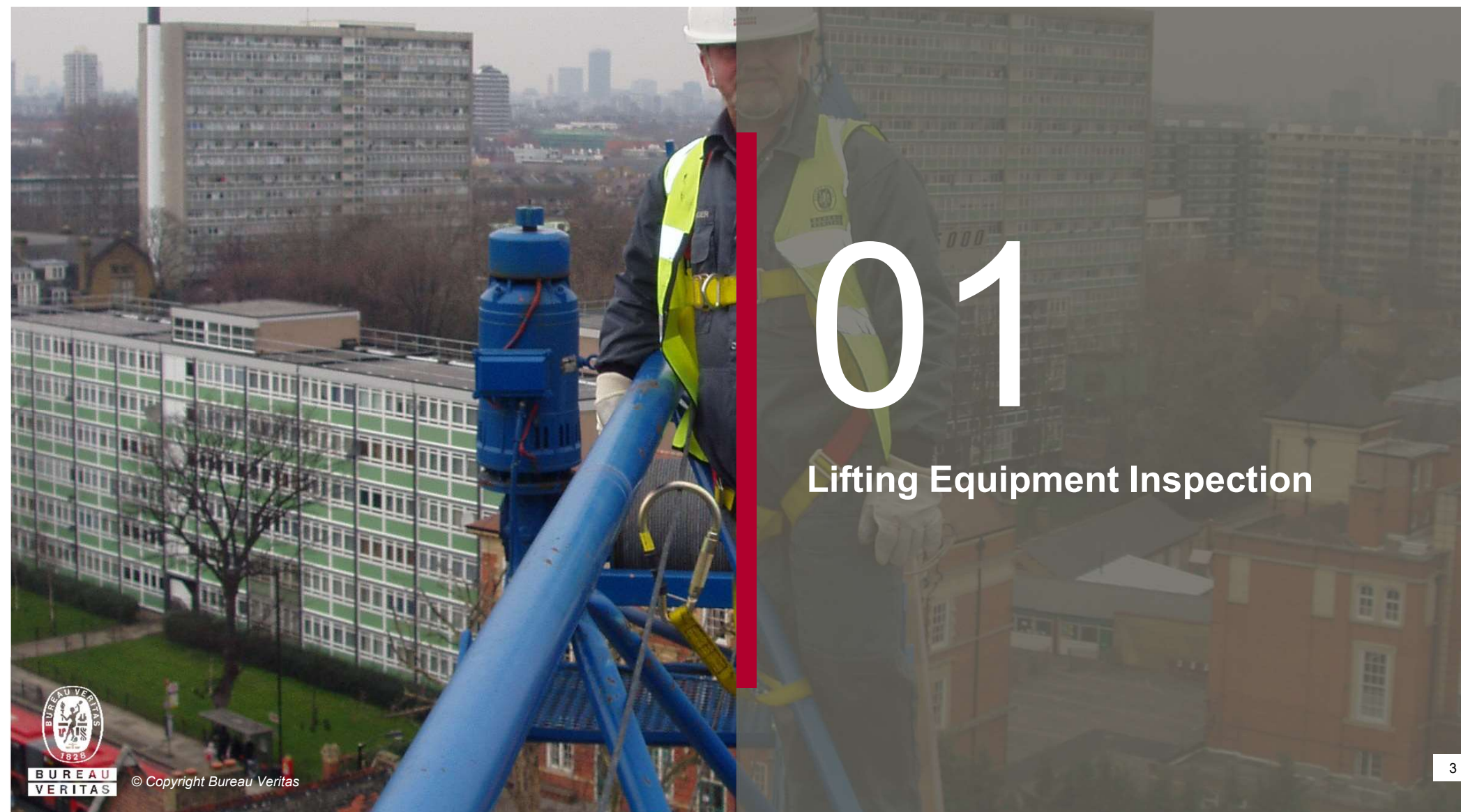
05

Pressure Systems Inspection



**BUREAU
VERITAS**

© Copyright Bureau Veritas



01

Lifting Equipment Inspection



**BUREAU
VERITAS**

© Copyright Bureau Veritas

LIFTING EQUIPMENT INSPECTION & OPERATIONS

- Lifting Appliances periodical inspections (Mobile cranes, Overhead cranes, Forklifts, Manlifts, etc.).
- Lifting Accessories periodical inspection (Wire rope slings, shackles, Chain slings, etc.).
- Review of lifting plans, Supervision of lifting operations.
- Training for Lifting Personnel (Crane operators, Riggers, Forklift Op., Manlift Op.)



To have regular thorough examinations carried out by a suitably competent person, is a major requirement of the Lifting Operations and Lifting Equipment Regulation (LOLER), 1998



BUREAU
VERITAS

© Copyright Bureau Veritas



LIFTING INSPECTION

REGULATIONS

According to LOLER Regulations 1998, all lifting equipment shall be periodically examined by competent person.

Lifting Appliances (i.e. cranes, forklifts, chain blocks, etc) shall be inspected at least annually.

Lifting Accessories (i.e. Slings, Shackles, Chains, etc.) shall be inspected every 6 months.

Lifting Appliances used for Lifting Persons shall be inspected every 6 months.



LIFTING INSPECTION

BUREAU VERITAS CAPABILITIES

Bureau Veritas Egypt Is a full member in LEEA (Lifting Equipment Engineers Association).

All of our inspectors are trained and certified by LEEA.

Our Inspections are done according the known international standards related to the equipment.



LIFTING INSPECTION

SOME OF OUR MAJOR CLIENTS



SIEMENS





ELEVATORS INSPECTION

- **Routine Elevator Inspections** – We are certified to provide the necessary third-party inspections to ensure your equipment conforms to the relevant public safety code requirements.
- **Periodic Elevator Inspections/Test Witnessing** – Annual safety tests must be witnessed by qualified third-parties in order ensure they are up to code. We are certified to perform these inspections and have a detailed understanding of the local requirements & International standards.



BUREAU
VERITAS

© Copyright Bureau Veritas

ELEVATORS INSPECTION

- **Final Elevator Acceptance Test Witnessing** – Before opening to the general public, many local code authorities require inspections and safety tests. We can help you complete the necessary final tests.
- **Elevator Accident Investigations** – We can provide accident investigation, code analysis, equipment assessment, expert witnessing services and more to help in investigation of accident that involves elevators.



BUREAU
VERITAS

© Copyright Bureau Veritas



ELEVATORS INSPECTION

SOME OF OUR MAJOR CLIENTS





03

Electrical Inspection



BUREAU
VERITAS

© Copyright Bureau Veritas

ELECTRICAL INSPECTION

- **Fixed electrical wiring inspection and testing**
 - Check the general conditions of the electrical installation starting from Transformer rooms, main LV distribution boards rooms, All LV distribution boards in the site i.e. Code Compliance inspection.
 - Megger Test
 - Earth continuity measurements
 - Testing and measurement of the response time of the Residual current devices RCD (Earth Leakage Circuit Breakers).
 - Earth loop impedance measurements for the Electrical Installation earth system.



BUREAU
VERITAS

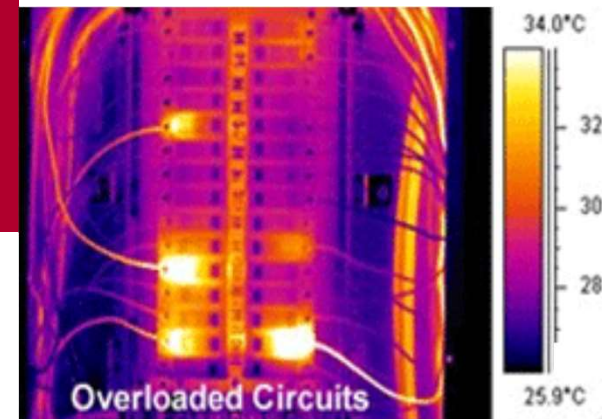
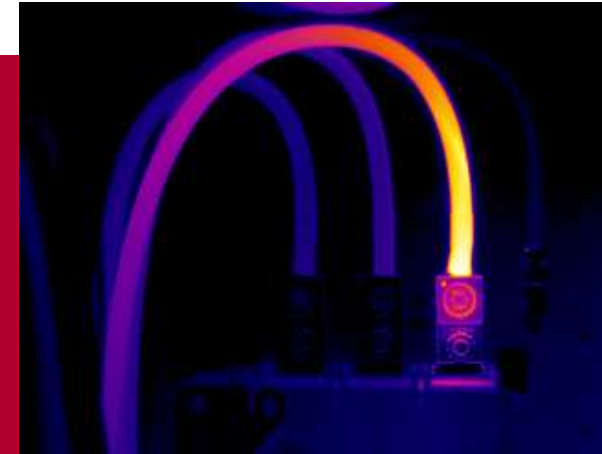
© Copyright Bureau Veritas

ELECTRICAL INSPECTION

• Thermographic Surveys

For transformers and electrical panels to detect hot spots/areas due to:

- Looseness/Bad contacts in connections (Fires starting Point)
- Overloaded circuit breakers/cables (Unwanted trips)
- Unbalanced loads for Low Voltage distribution panels at full load condition.



BUREAU
VERITAS

© Copyright Bureau Veritas

ELECTRICAL INSPECTION

• Lightning Arrestor Inspection

- Check the height of lightning conductor
- Check the used material for the down conductor for suitability.
- Ensure that the down conductors are routed, located and electrically bonded as required.
- Ensure that the safety distance is respected and there is enough equipotential bonding and their condition is correct.
- Measurement of earth termination system resistance.
- Check the continuity of the lightning system between the highest and lowest point.
- Check all component fasteners and mechanical protectors and ensure that they are in a good condition.



BUREAU
VERITAS

© Copyright Bureau Veritas

ELECTRICAL INSPECTION

SOME OF OUR MAJOR CLIENTS



TOTAL

ExxonMobil

SIEMENS



Le MERIDIEN



BUREAU VERITAS

© Copyright Bureau Veritas

04

Fire Safety Inspection



BUREAU
VERITAS

© Copyright Bureau Veritas

FIRE SAFETY INSPECTION

- **Consists of 2 main parts:**
 - **1- Fire Safety Control Inspection**
 - **2- Inspection of Mechanical Components**



FIRE SAFETY INSPECTION

• Fire Safety Control Inspection

Check the Fire Safety Procedures and Arrangement.

Check the Fire Containment Zones

Check the Escape Ways

Check the Emergency Exit Lights and Ambient Lights validity and distribution.

Check the Extinguishers, Fire Hoses and Safety Elements distribution and validity.

Check the fire alarm panels.

Check the Fire System functionality and reliability in case of evacuation

Check the emergency generator connectivity and automatic response

Check the elevators fire men switches functionality

Witnessing the periodical maintenance tests for the automatic extinguishment systems



FIRE SAFETY INSPECTION

• Inspection of Mechanical Components

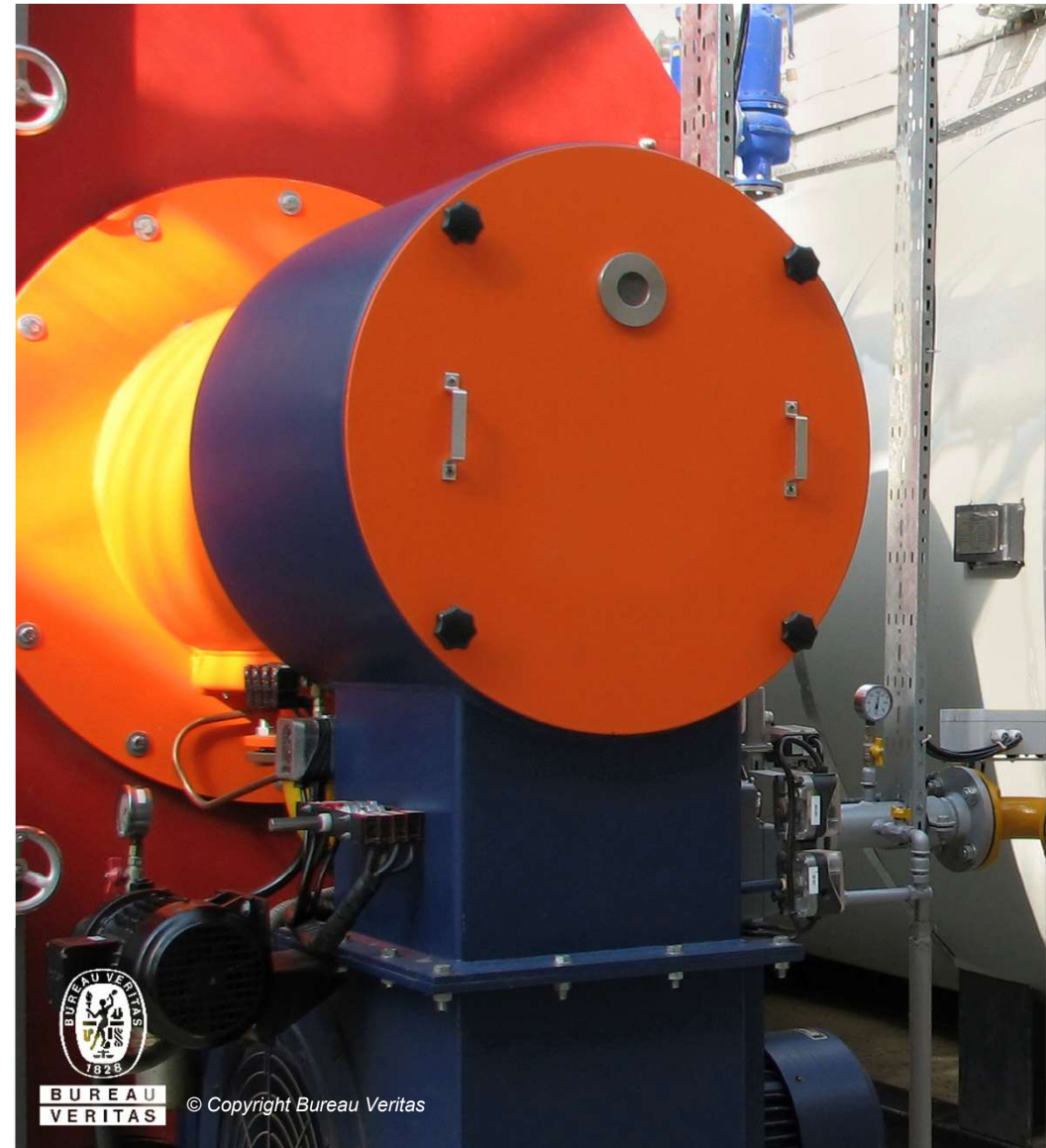
- Check the general conditions of the firefighting mechanical works starting from Fire tank, pipes, Pumps room, Zone control stations and sprinkler units. (Code Compliance).
- Check the water network functionality and reliability



FIRE SAFETY INSPECTION

SOME OF OUR MAJOR CLIENTS





05

Pressure Systems Inspection



**BUREAU
VERITAS**

© Copyright Bureau Veritas

PRESSURE SYSTEMS INSPECTION

• Boilers Inspection

- External visual examination.
- Internal visual examination.
- Wall Thickness Measurements
- Functional (Operational) tests.
- Safety devices tests. (electrical & Mechanical)
- Combustion tests (Gas Analysis test)
- Service Leak test (pressure test)



PRESSURE SYSTEMS INSPECTION

• LPG tanks Inspection

- External visual examination.
- Internal visual examination.
- Wall Thickness Measurements
- NDE (UT shear wave , MT) on all critical areas.
- Corrosion rate and remaining life calculations.
- Witness of Hydrostatic tests when required.



PRESSURE SYSTEM INSPECTION

SOME OF OUR MAJOR CLIENTS





BUREAU
VERITAS

Move Forward with Confidence